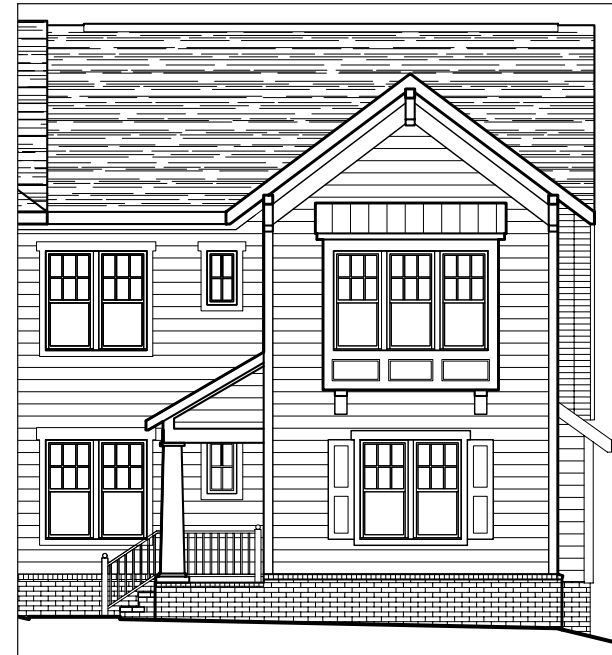




BUCKINGHAM  
9520 Creek Summit Circle

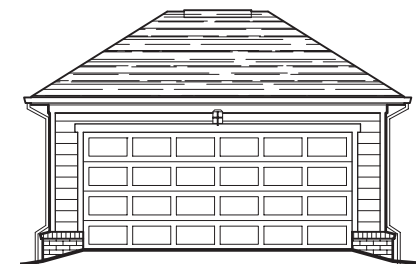
- Three Bedrooms
- Two-and-one-half Baths
- Attached Two-car Garage
- First-floor Master Bedroom



Front Elevation



Side Elevation

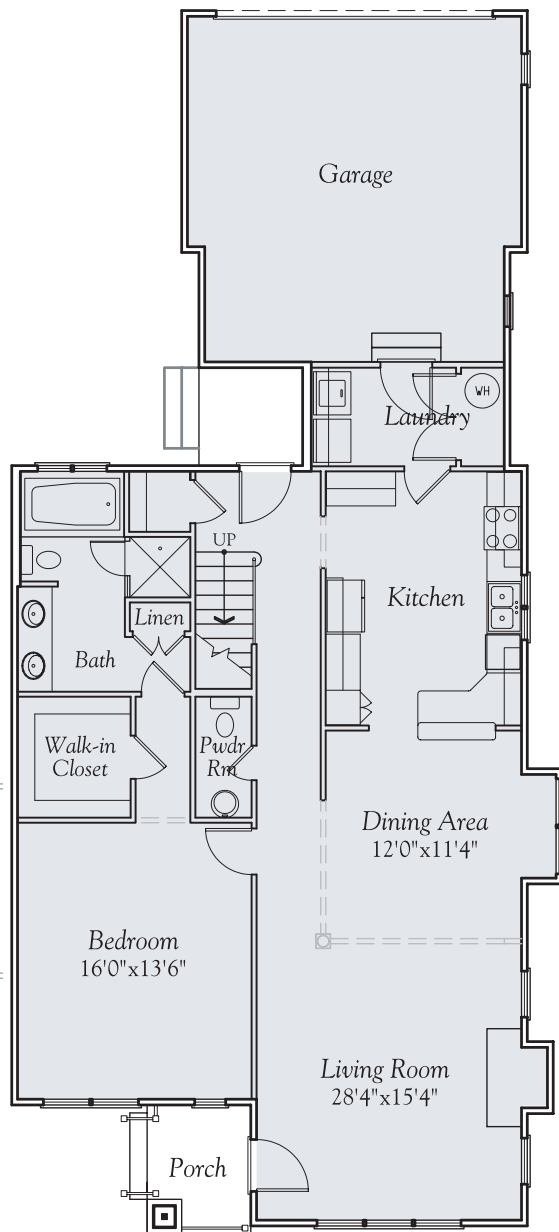


Rear Garage Elevation

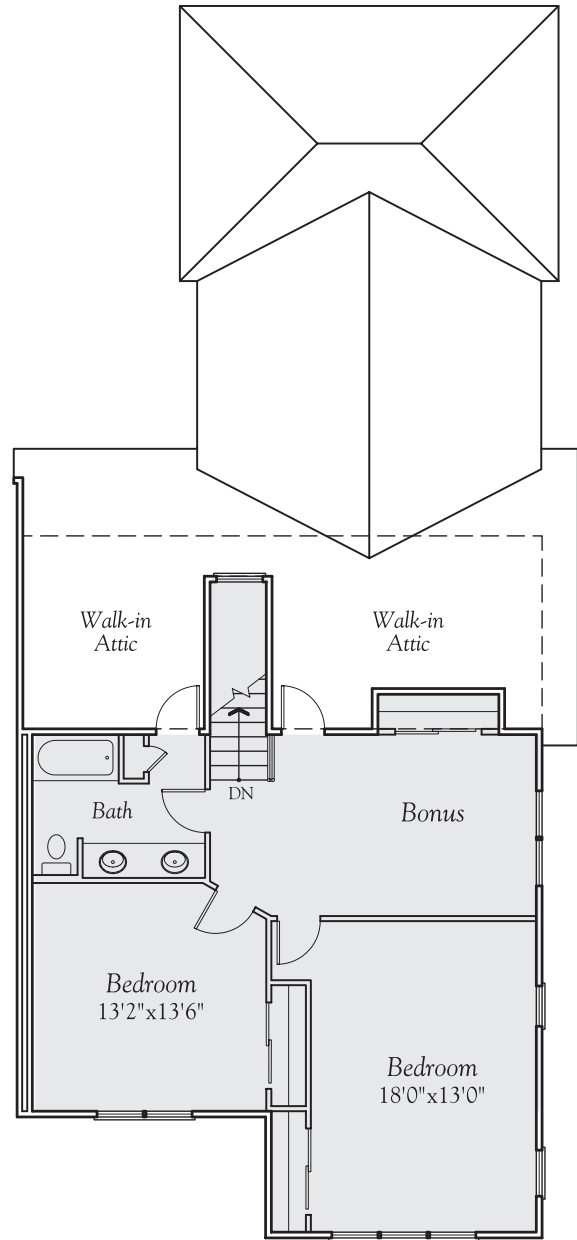
9400 CREEK'S CROSSING BOULEVARD  
RICHMOND, VIRGINIA 23235  
PHONE: 804 330 0222 FAX: 804 330 0766  
WWW.CREEKSEGEHOMES.COM

CREEK'S EDGE  
at STONY POINT  
TOWN HOMES

*The developer reserves the right to change  
town home floorplans and elevations.  
Actual dimensions are subject to variations.  
Copyright of Commonwealth Architects.*



Main Level Plan



Upper Level Plan

CREEK'S EDGE  
at STONY POINT  
TOWN HOMES

9400 CREEK'S CROSSING BOULEVARD  
RICHMOND, VIRGINIA 23235  
PHONE: 804 330 0222 FAX: 804 330 0766  
WWW.CREEKSEGEDHOMES.COM

The developer reserves the right to change town home floorplans and elevations. Actual dimensions are subject to variations.