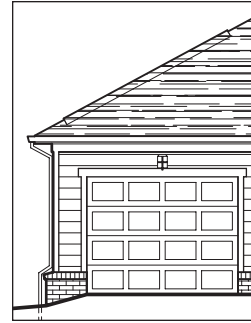




GEORGETOWN
9313 Creek's Crossing Boulevard

Three Bedrooms
Two-and-one-half Baths
Detached One-car Garage



Rear Garage Elevation



Front Elevation

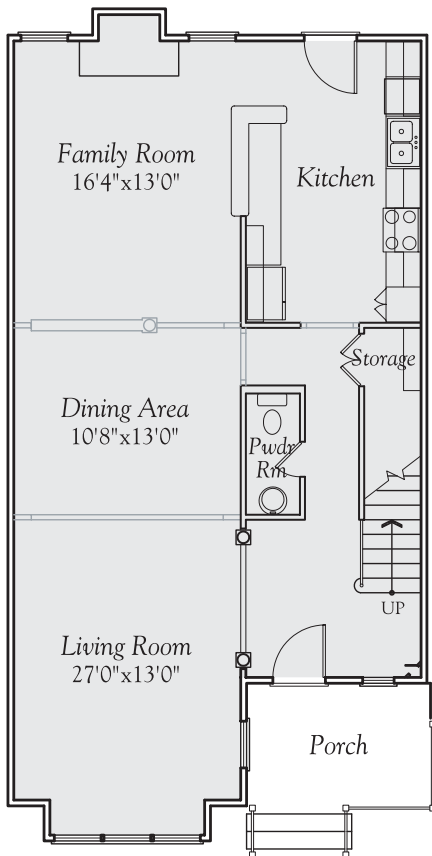
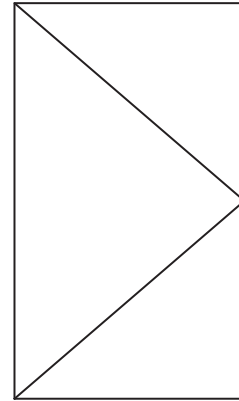
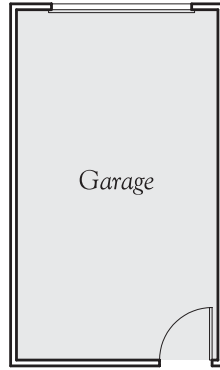


Rear Elevation

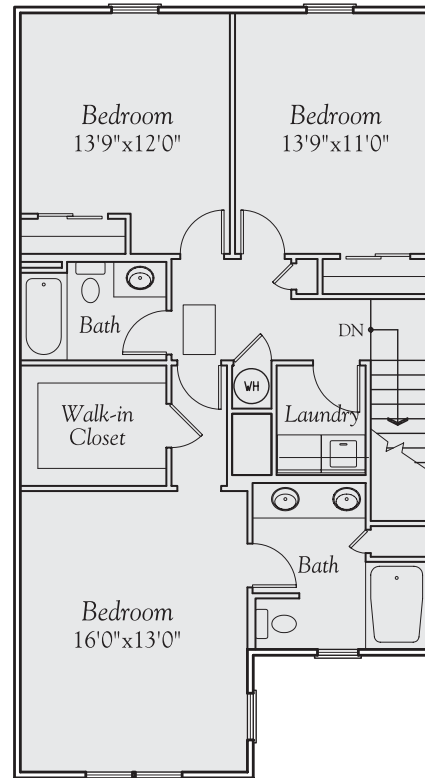
9400 CREEK'S CROSSING BOULEVARD
RICHMOND, VIRGINIA 23235
PHONE: 804 330 0222 FAX: 804 330 0766
WWW.CREEKSEDGEHOMES.COM

CREEK'S
at STONY POINT
EDGE
POINT
T O W N H O M E S

*The developer reserves the right to change
town home floorplans and elevations.
Actual dimensions are subject to variations.
Copyright of Commonwealth Architects.*



Main Level Plan



Upper Level Plan

CREEK'S **EDGE**
at **STONY** **POINT**
T O W N H O M E S

9400 CREEK'S CROSSING BOULEVARD
RICHMOND, VIRGINIA 23235
PHONE: 804 330 0222 FAX: 804 330 0766
WWW.CREEKSEGEDHOMES.COM

The developer reserves the right to change town home floorplans and elevations. Actual dimensions are subject to variations.