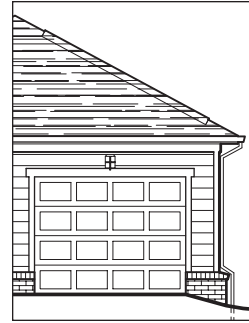




GEORGETOWN  
9310 Creek's Crossing Boulevard

Three Bedrooms  
Two-and-one-half Baths  
Detached One-car Garage



Rear Garage Elevation



Front Elevation

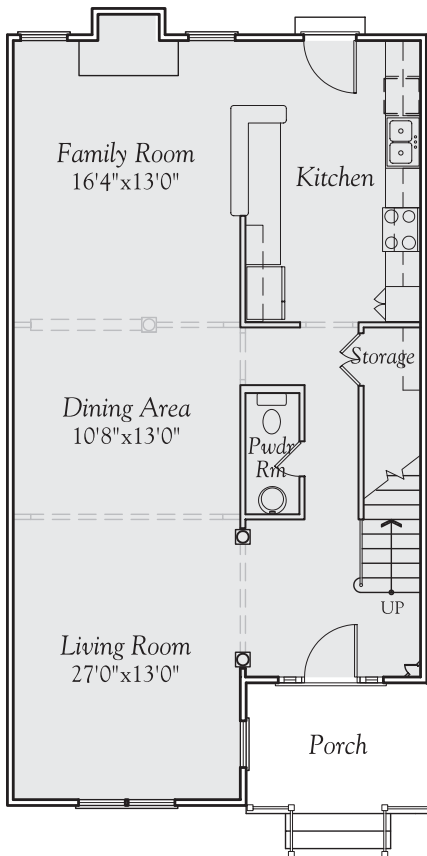
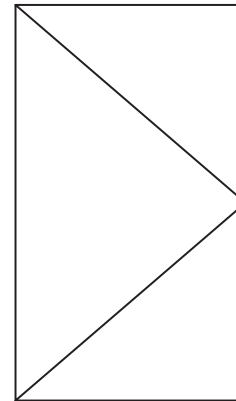
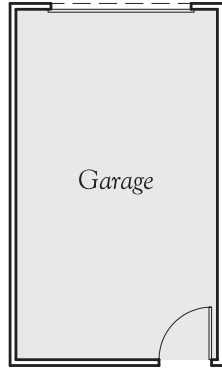


Rear Elevation

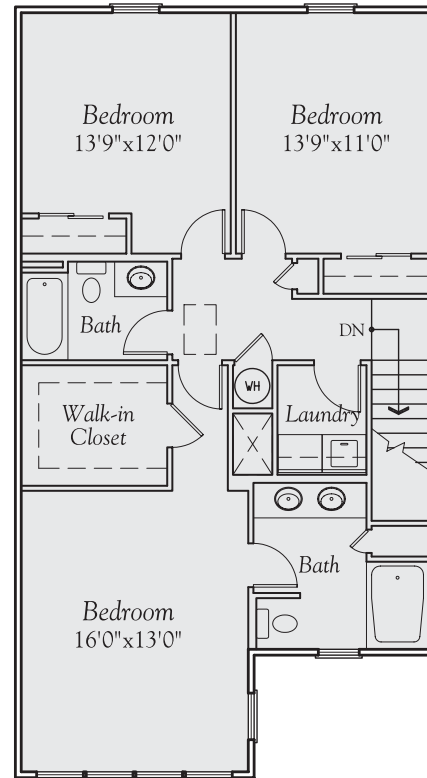
9400 CREEK'S CROSSING BOULEVARD  
RICHMOND, VIRGINIA 23235  
PHONE: 804 330 0222 FAX: 804 330 0766  
WWW.CREEKSEGEHOMES.COM

CREEK'S  
at STONY POINT  
EDGE  
T O W N H O M E S

*The developer reserves the right to change  
town home floorplans and elevations.  
Actual dimensions are subject to variations.  
Copyright of Commonwealth Architects.*



Main Level Plan



Upper Level Plan

**CREEK'S**  
at **STONY POINT**  
**EDGE**  
T O W N H O M E S

9400 CREEK'S CROSSING BOULEVARD  
RICHMOND, VIRGINIA 23235  
PHONE: 804 330 0222 FAX: 804 330 0766  
WWW.CREEKSEGEDHOMES.COM

*The developer reserves the right to change town home floorplans and elevations. Actual dimensions are subject to variations.*