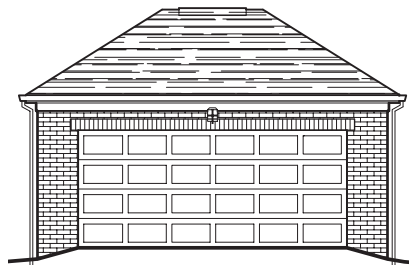
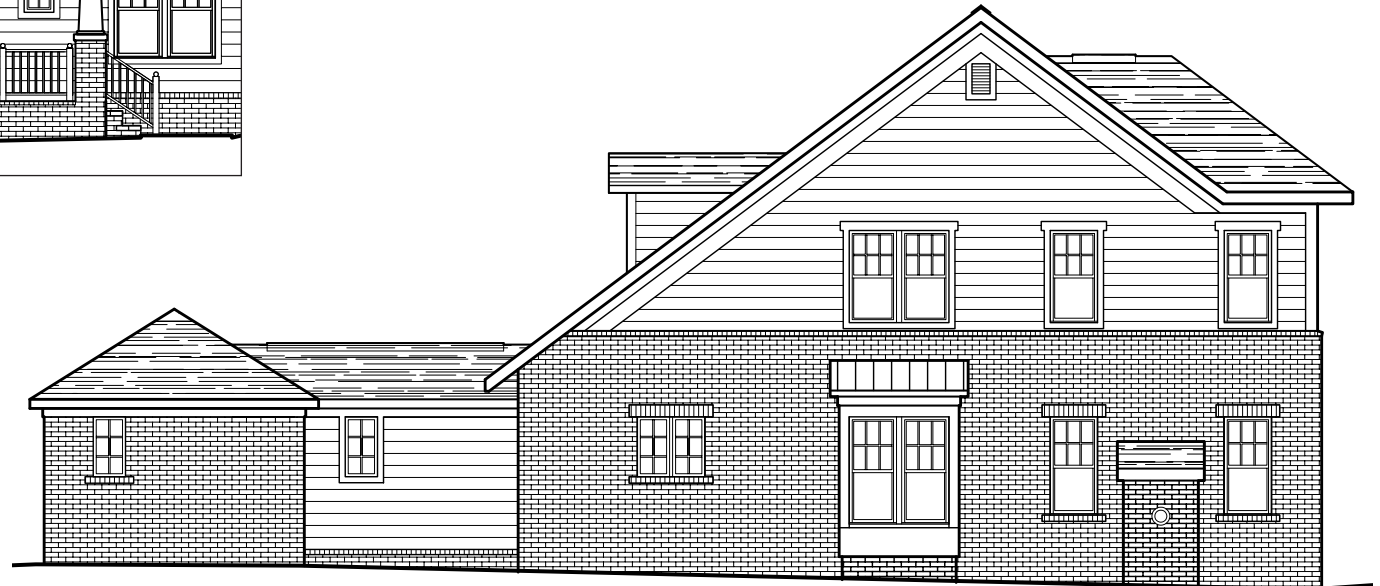




Front Elevation



Rear Garage Elevation



Side Elevation



BUCKINGHAM [LOFT]

9300 Creek's Crossing Boulevard

Three Bedrooms

Two-and-one-half Baths

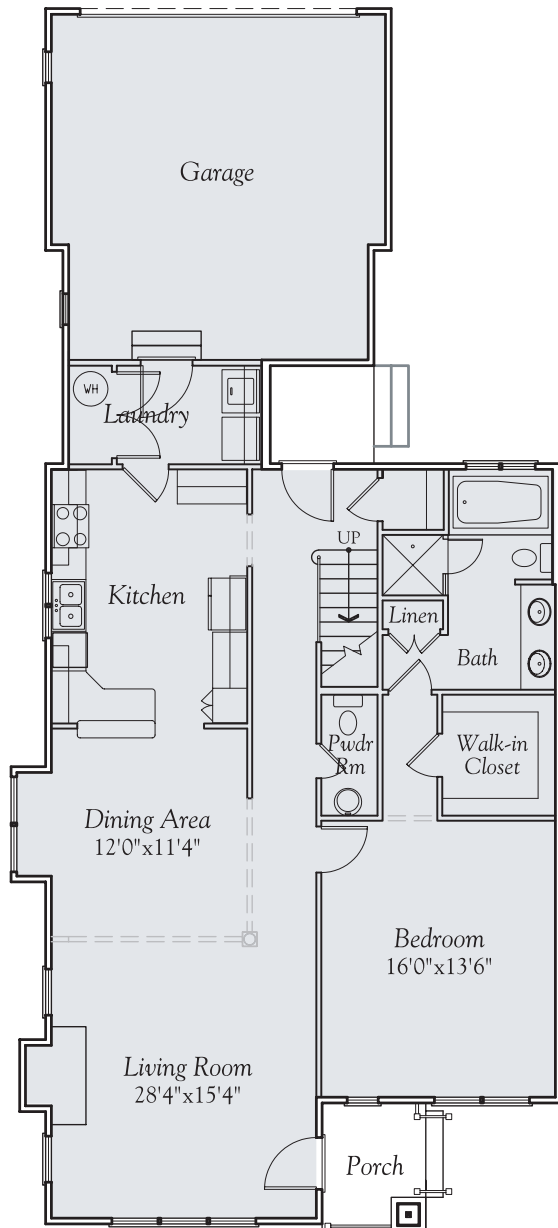
Attached Two-car Garage

First-floor Master Bedroom

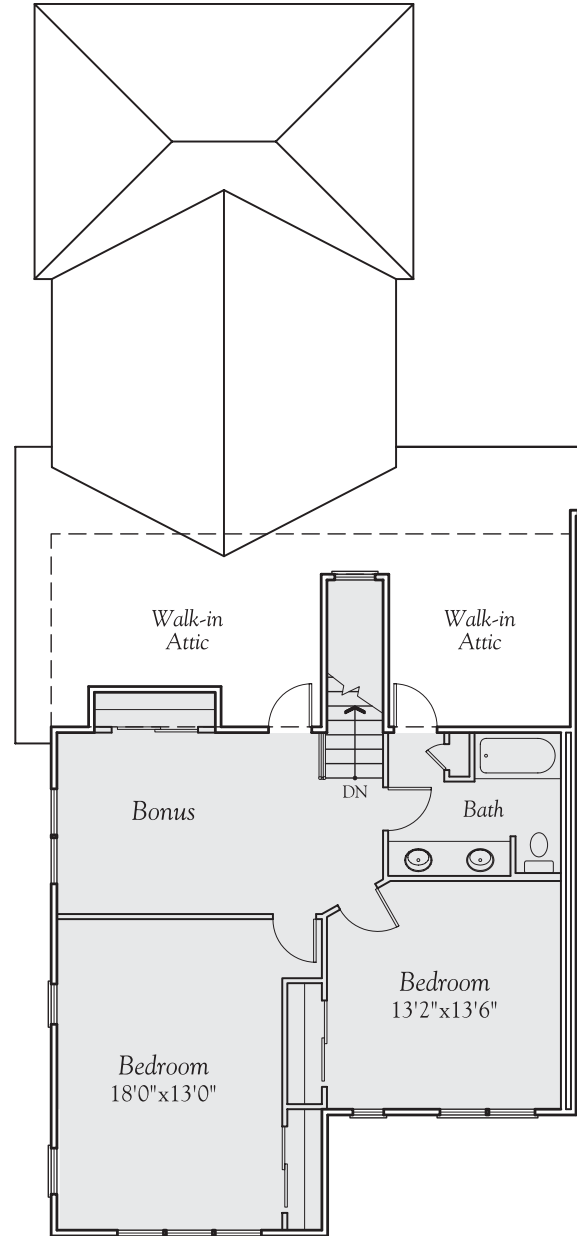
9400 CREEK'S CROSSING BOULEVARD
RICHMOND, VIRGINIA 23235
PHONE: 804 330 0222 FAX: 804 330 0766
WWW.CREEKSEGEHOMES.COM

CREEK'S EDGE
at STONY POINT
TOWN HOMES

*The developer reserves the right to change
town home floorplans and elevations.
Actual dimensions are subject to variations.
Copyright of Commonwealth Architects.*



Main Level Plan



Upper Level Plan

CREEK'S EDGE
at STONY POINT
TOWN HOMES

9400 CREEK'S CROSSING BOULEVARD
RICHMOND, VIRGINIA 23235
PHONE: 804 330 0222 FAX: 804 330 0766
WWW.CREEKSEGEDHOMES.COM

The developer reserves the right to change town home floorplans and elevations. Actual dimensions are subject to variations.